

COMPANION PLANTING WITH NATIVE PLANTS...

...to Create Beautiful, Naturalistic, Gardens

Barbara Ryan

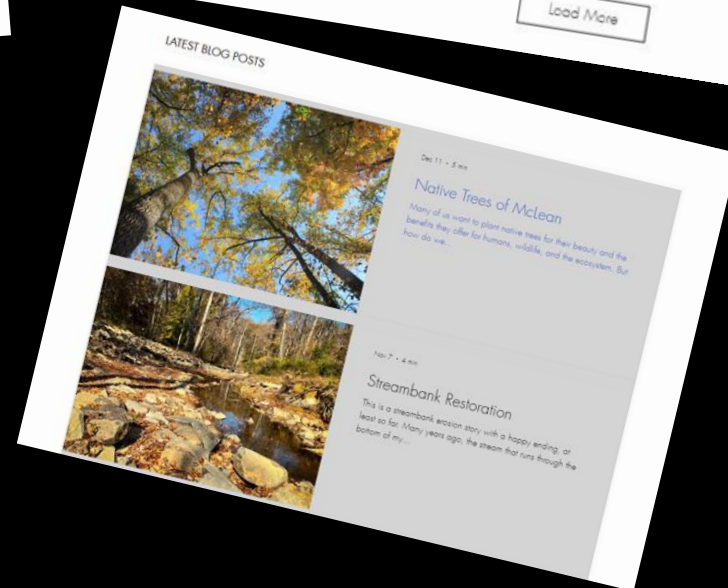
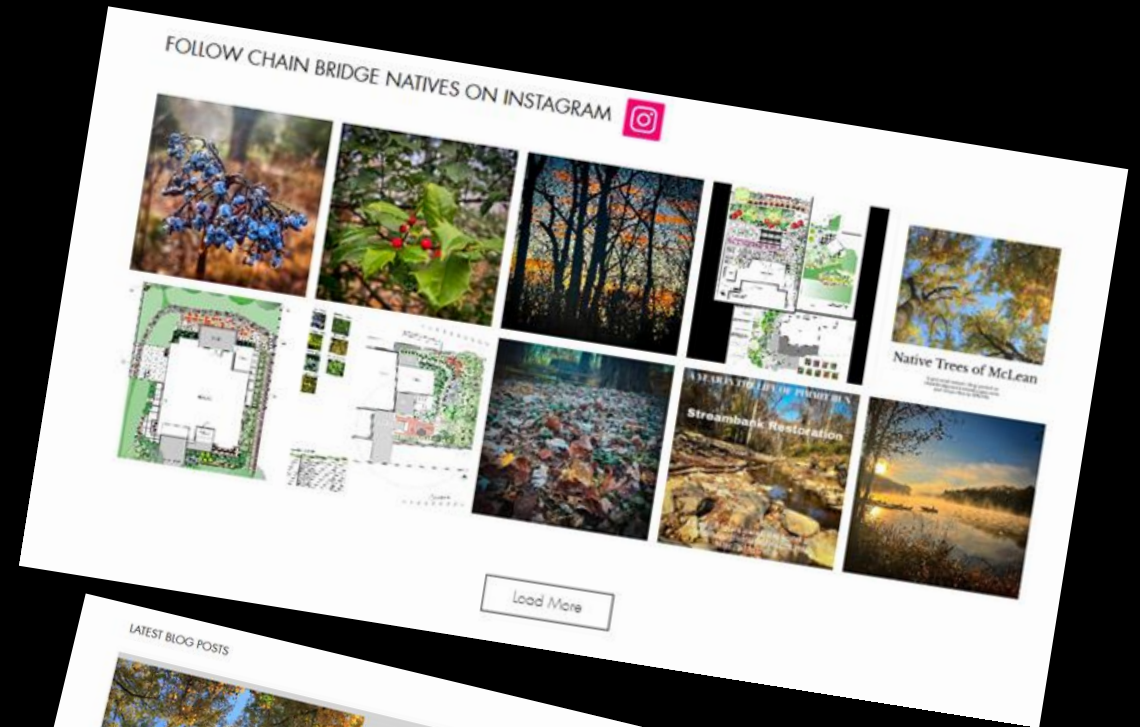
Chain Bridge Native Landscapes

**6th Annual Prince William Native Plant
Symposium**

February 10, 2024



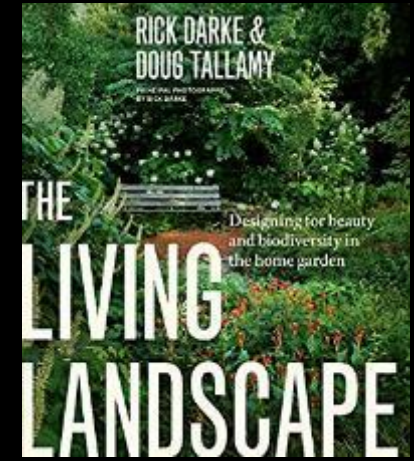
About Me



What is a Native Plant?

“native: a plant or animal that has evolved in a given place over a period of time sufficient to develop complex and essential relationships with the physical environment and other organisms in a given ecological community.”

-- Rick Darke & Doug Tallamy, “The Living Landscape”



Why Plant Native Plants?



Agricultural Companion Plants



Ecological Companion Plants

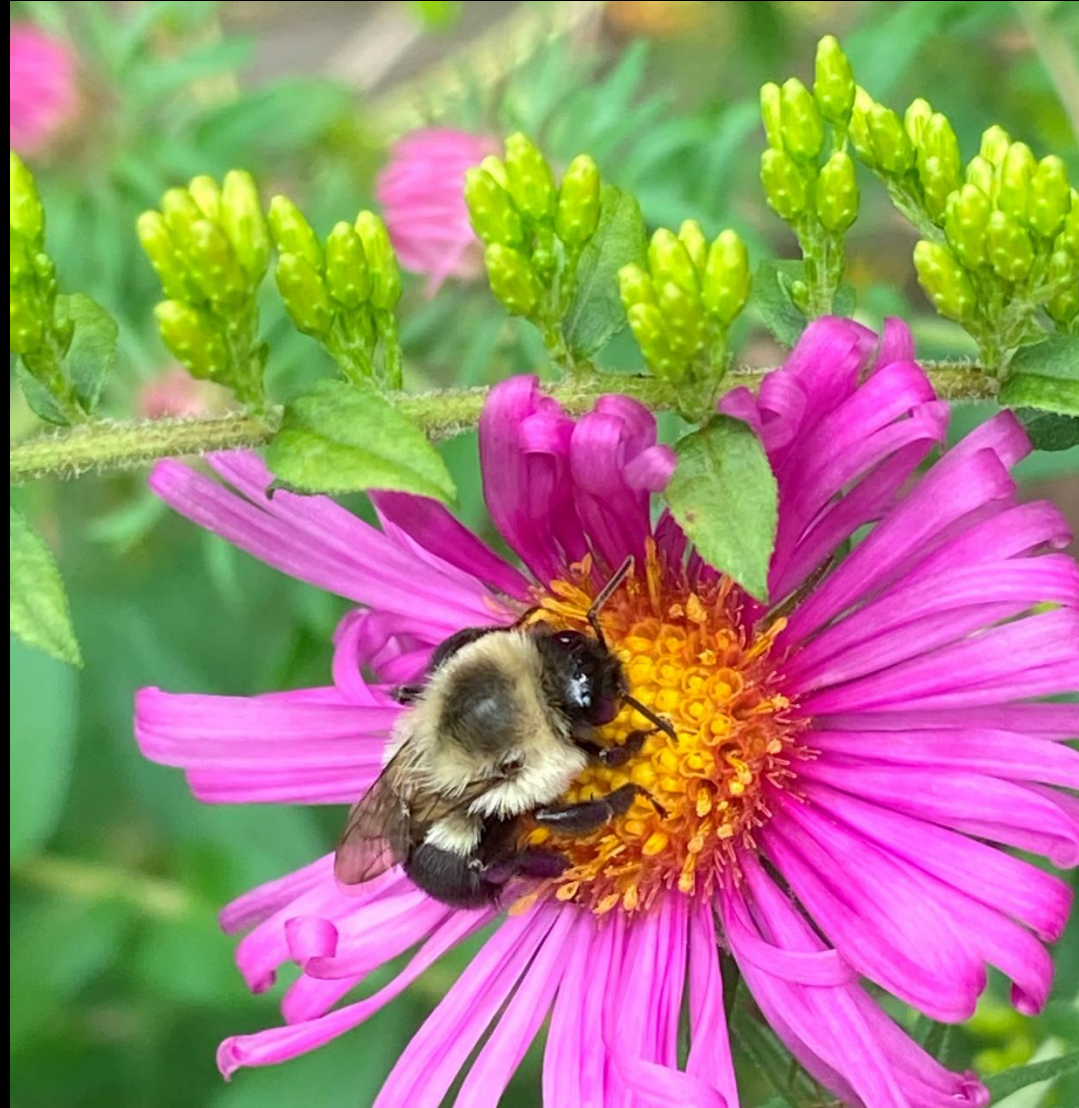
COMMONWEALTH of VIRGINIA

The Natural Communities of Virginia: Ecological Groups and Community Types



Virginia Department of Conservation and Recreation
Division of Natural Heritage
Natural Heritage Technical Report 23-15
July 2021

Aesthetic Companion Plants



Traditional Flower Bed



Coloring with Native Plants

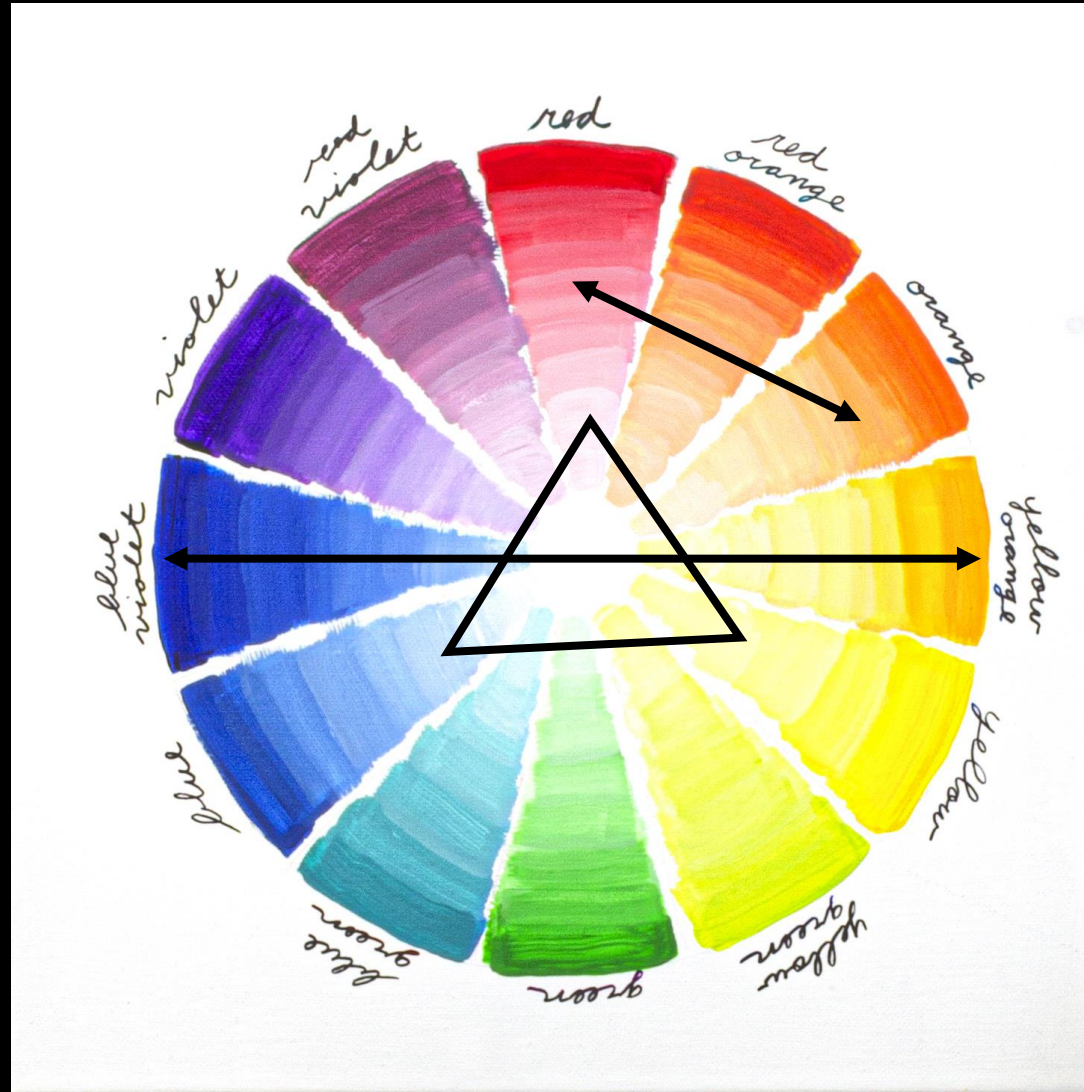
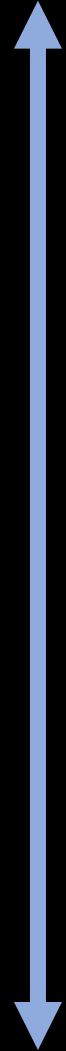
- Colors are often muted, and that's part of the beauty of native plants
- Spring and fall are dominated by blues and yellows to attract pollinators
- Bloom seasonality dictates what's possible



Let's Talk About Color



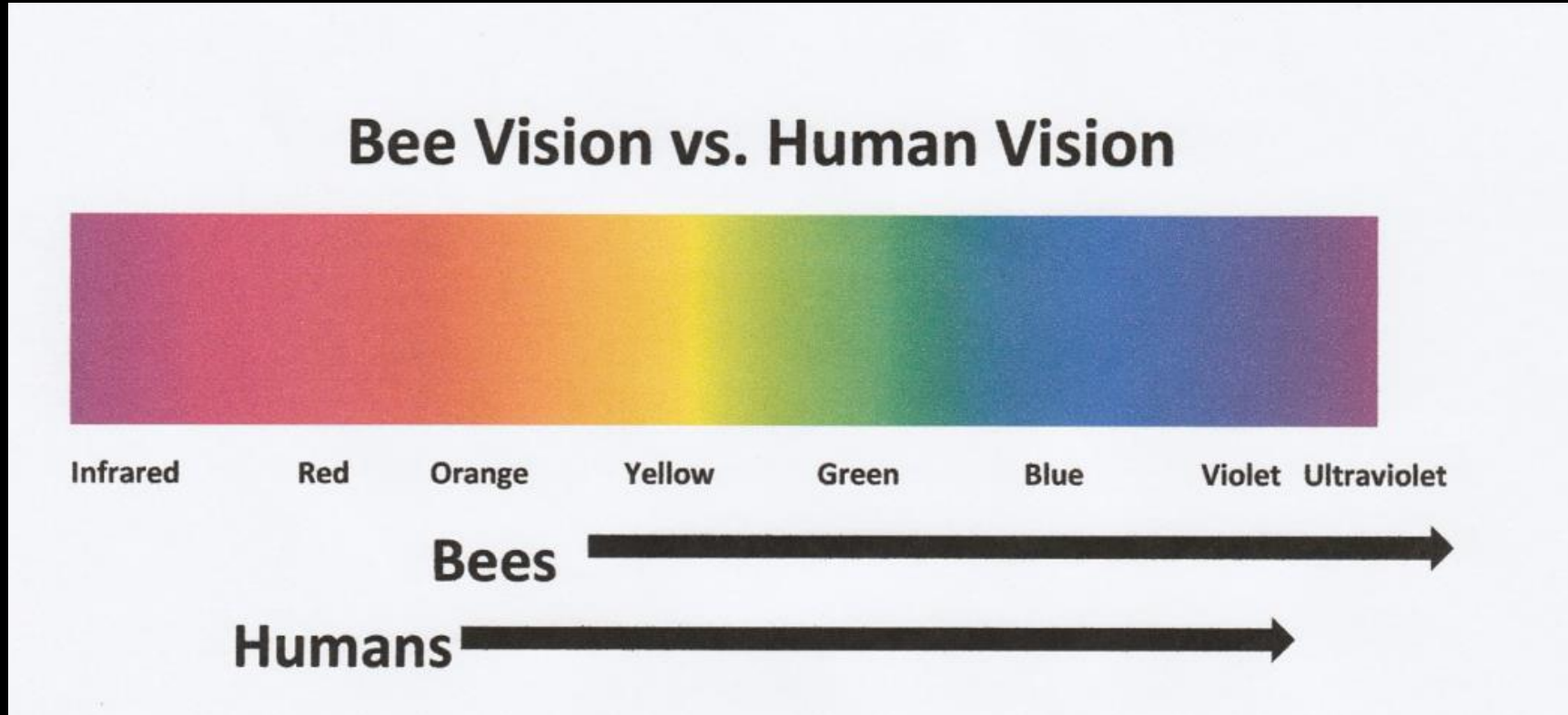
COOL



WARM

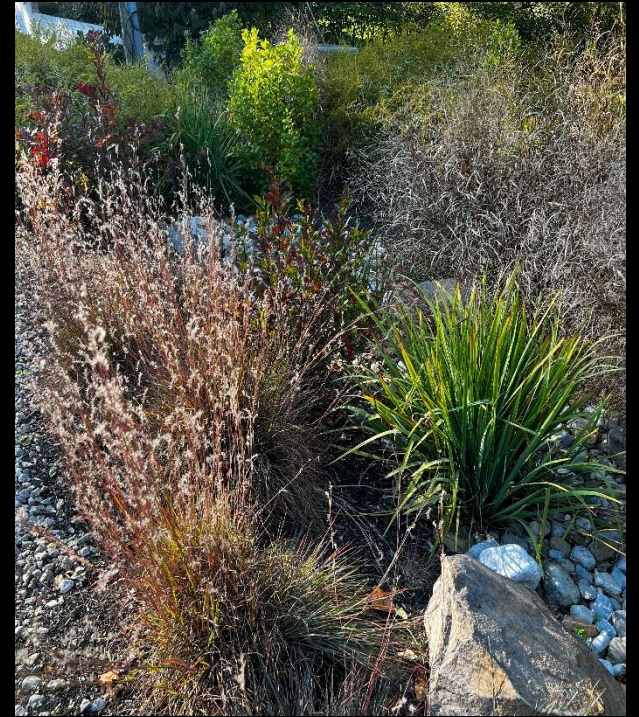
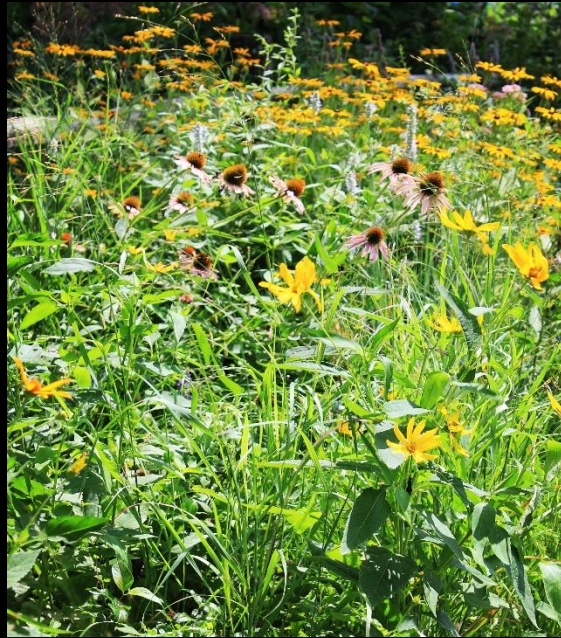


What Bees See



<https://www.beeeculture.com/bees-see-matters/>

Structure



Structure



Finding Inspiration in Nature

- Layers
- Colors
- Textures
- Whimsy



Native Companion Plant Dimensions

MATRIX PLANTING (Planting in Layers)



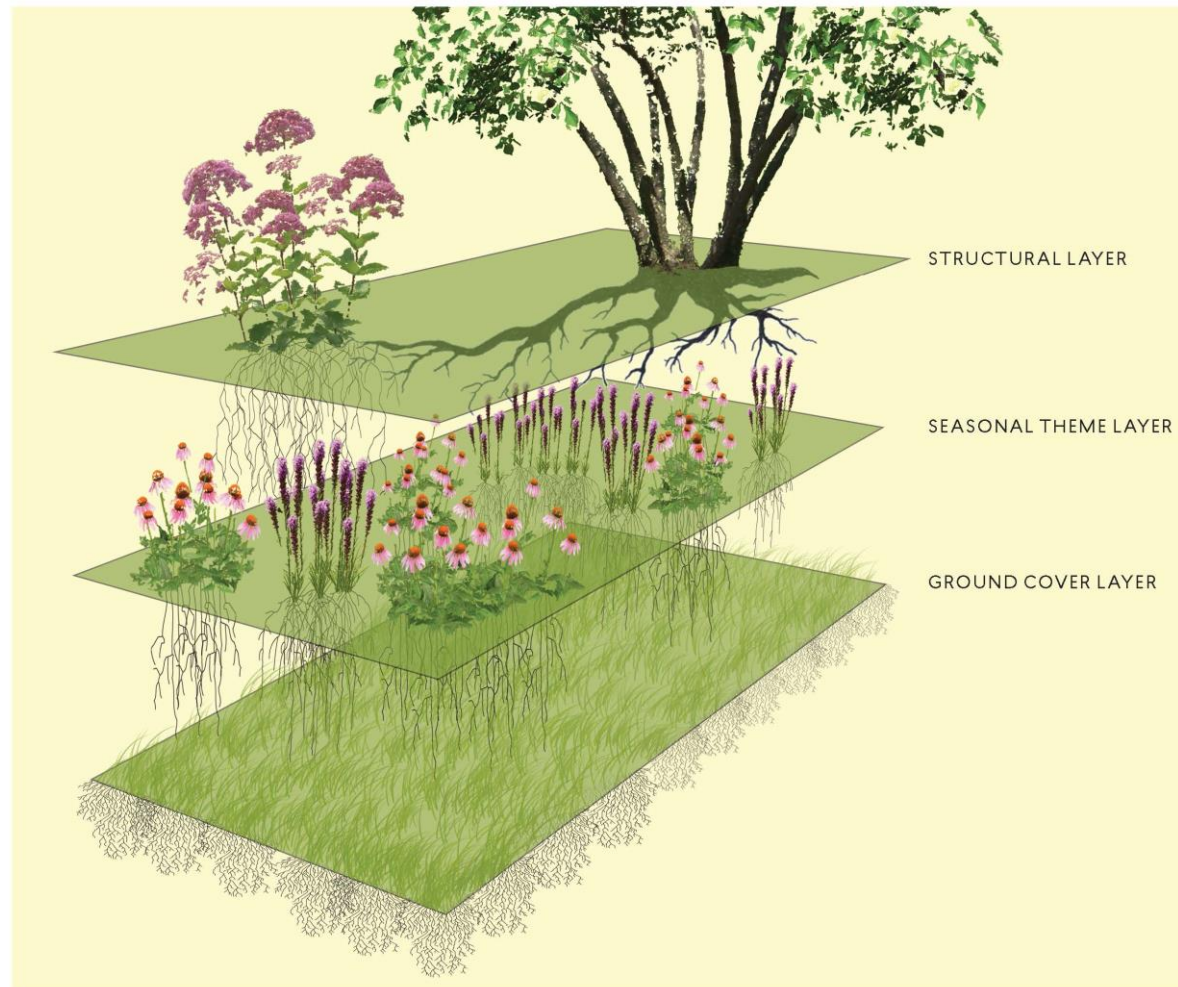
SUCCESSIONAL PLANTING (Planting for All Seasons)



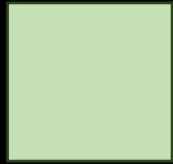
<https://science.howstuffworks.com/nature/climate-weather/atmospheric/climate-change-four-seasons-redefine.htm>

Matrix Planting

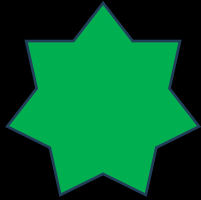
LAYERS OF A DESIGNED PLANT COMMUNITY



Matrix Planting Schematic



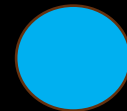
Matrix Layer - Ground Cover



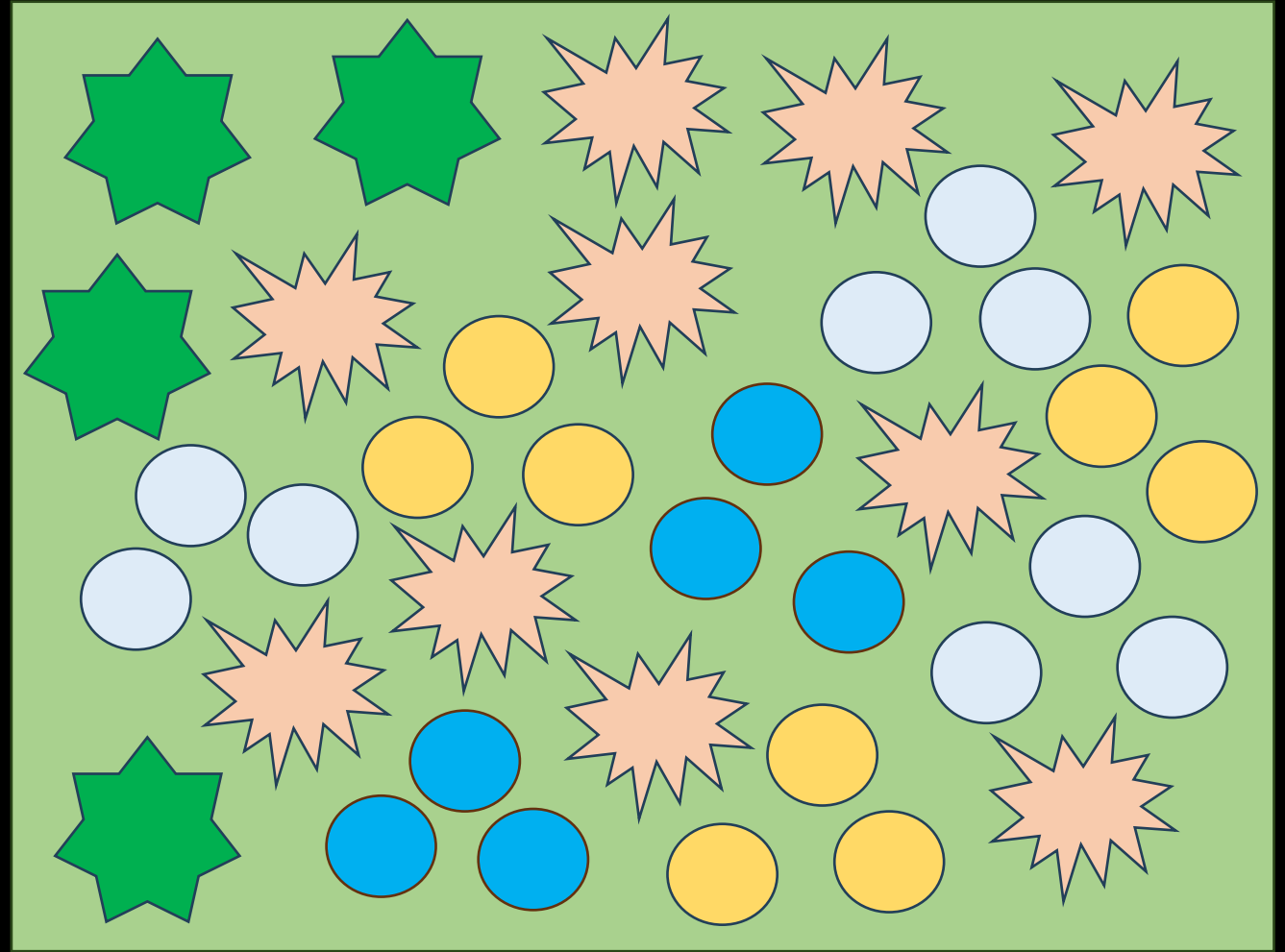
Structural Layer - Shrubs



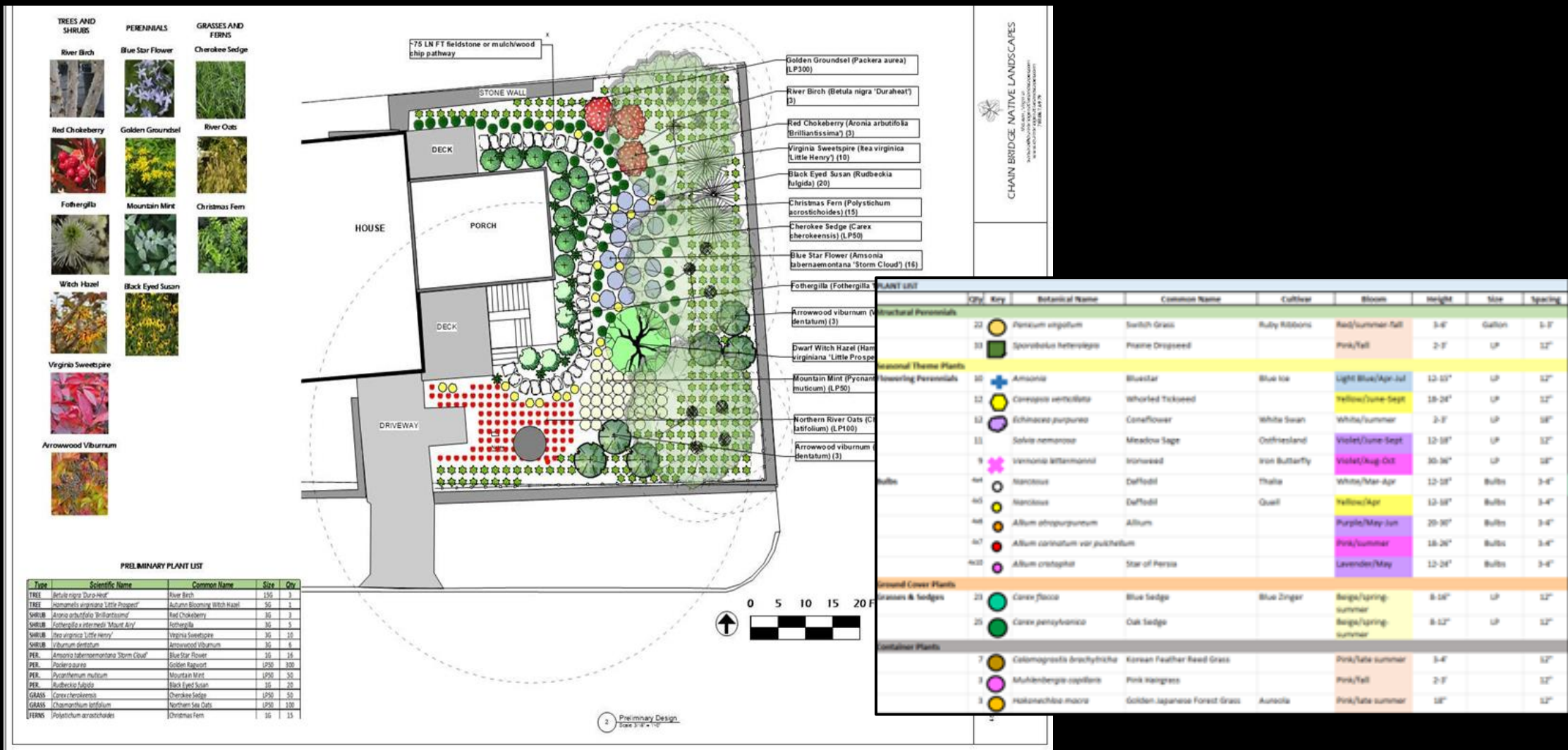
Structural Layer - Grasses



Seasonal Theme Layer –
Perennials



Design Details



Matrix/Ground Cover Layer

Carex spp.
Carex Sedges (various)



Phlox subulata
Moss Phlox



Polystichum acrostichoides/
Christmas Fern



Tiarella cordifolia
Foamflower



Aster ericoides
Heath Aster



Packera aurea
Golden Groundsel



Geranium maculatum
Wild Geranium



Anemone canadensis
Windflower



Seasonal Theme Layer

Asclepias tuberosa
Butterfly Weed



Rudbeckia fulgida
Orange Coneflower



Aquilegia canadensis
Columbine



Monarda fistulosa
Wild Bergamot



Aster novae anglis
New York Aster



Solidago rugosa
Goldenrod



Eurybia divaricatus
White Wood Aster



Chelone glabra
Turtlehead



Structural Layer

Shrubs

Ilex glabra
Inkberry



Itea virginica
Virginia Sweetspire



Viburnum nudum
Smooth Witherod



Clethra alnifolia
Summersweet



Panicum virgatum
Switchgrass



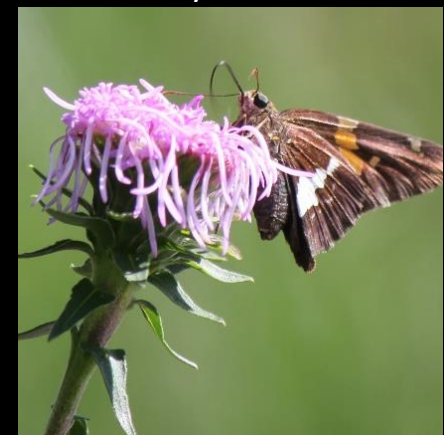
Schizachium scoparium
Little Bluestem



Asclepias incarnata
Swamp Milkweed



Liatris spicata
Gayflower



Grasses & Tall Perennials

Planting Densely















Keeping it Simple



Planting for All Seasons

Early Spring



Spring



Early Summer



Late Summer/Fall



Winter



Spring



Sanguinaria canadensis
Bloodroot



Podophyllum peltatum
Mayapple



Erythronium americanum
Yellow Trout Lily



Trillium sessile
Toadshade



Mertensia virginica
Virginia Bluebell

Spring



Phlox subulata
Moss Phlox



Packera aurea
Golden Groundsel



Viola sororia
Violet

Spring



Geranium maculatum
Wild Geranium



Amsonia tabernaemontana
Blue-star Amsonia



Sisyrinchium angustifolium
Blue Eyed Grass

Spring



Iris cristata
Dwarf Crested Iris



Aquilegia canadensis
Columbine



Zizia aurea
Golden Alexander

Geranium maculatum
Wild Geranium
&
Zizia aurea
Golden Alexander



Packera aurea
Golden Groundsel
&
Various Sedges and
Early Perennials



Amsonia tabernaemontana
Blue Star Amsonia
&
Various Sedges



Phlox subulata
Moss Phlox
&
Various Sedges and
Early Perennials



Sisyrinchium angustifolium
Blue Eyed Grass
&
Phlox subulata
Moss Phlox



Matteuccia struthiopteris
Ostrich Fern
&
Phlox divaricata
Woodland Phlox
&
Aquilegia Canadensis
Wild Columbine



Summer



Asclepias tuberosa
Butterfly Weed



Coreopsis verticillata
Threadleaf Tickseed



Penstemon smalli
Beardtongue

Summer



Echinacea purpurea
Purple Coneflower



Monarda fistulosa
Wild Bergamot

Summer



Asclepias incarnata
Swamp Milkweed



Agastache foeniculum
Anise Hyssop

Summer



Pycnanthemum muticum
Short Toothed Mountain Mint



Monarda punctata
Spotted Bee Balm

Asclepias tuberosa
Butterfly Weed
&
Penstemon smalli
Beardtongue



Coreopsis verticillata
Threadleaf Tickseed
&
Lysimachia lanceolata
Lanceleaf Loosestrife



Erigeron annuus
Fleabane
&
Echinacea purpurea
Purple Coneflower



Pycnanthemum muticum
Short Toothed Mountain Mint
&
Echinacea purpurea
Purple Coneflower



Eupatorium perfoliatum
Common Boneset
&
Various species



Heliopsis helianthoides
Smooth Oxeye
&
Agastache Foeniculum
Giant Blue Hyssop



Late Summer/Fall



Rudbeckia fulgida
Black Eyed Susan



Eutrochium dubium
Baby Joe Pye Weed

Late Summer/Fall



Lobelia cardinalis
Cardinal Flower



Conoclinium coelestinum
Blue Mist Flower

Late Summer/Fall



Eurybia divaricata
White Wood Aster



Symphotrichum cordifolium
Blue Wood Aster

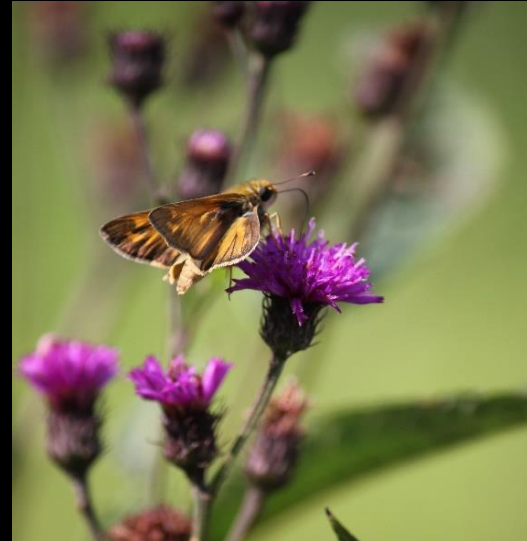
Late Summer/Fall



Aster novi-belgii
New York Aster
Aster novae-angliae
New England Aster



Lobelia siphilitica
Great Blue Lobelia



Vernonia noveboracensis
New York Ironweed



Solidago spp.
Goldenrod

Late Summer/Fall



Schizachyrium scoparium
Little Bluestem



Chasmanthium latifolium
Northern River Oats



Panicum virgatum
Switchgrass



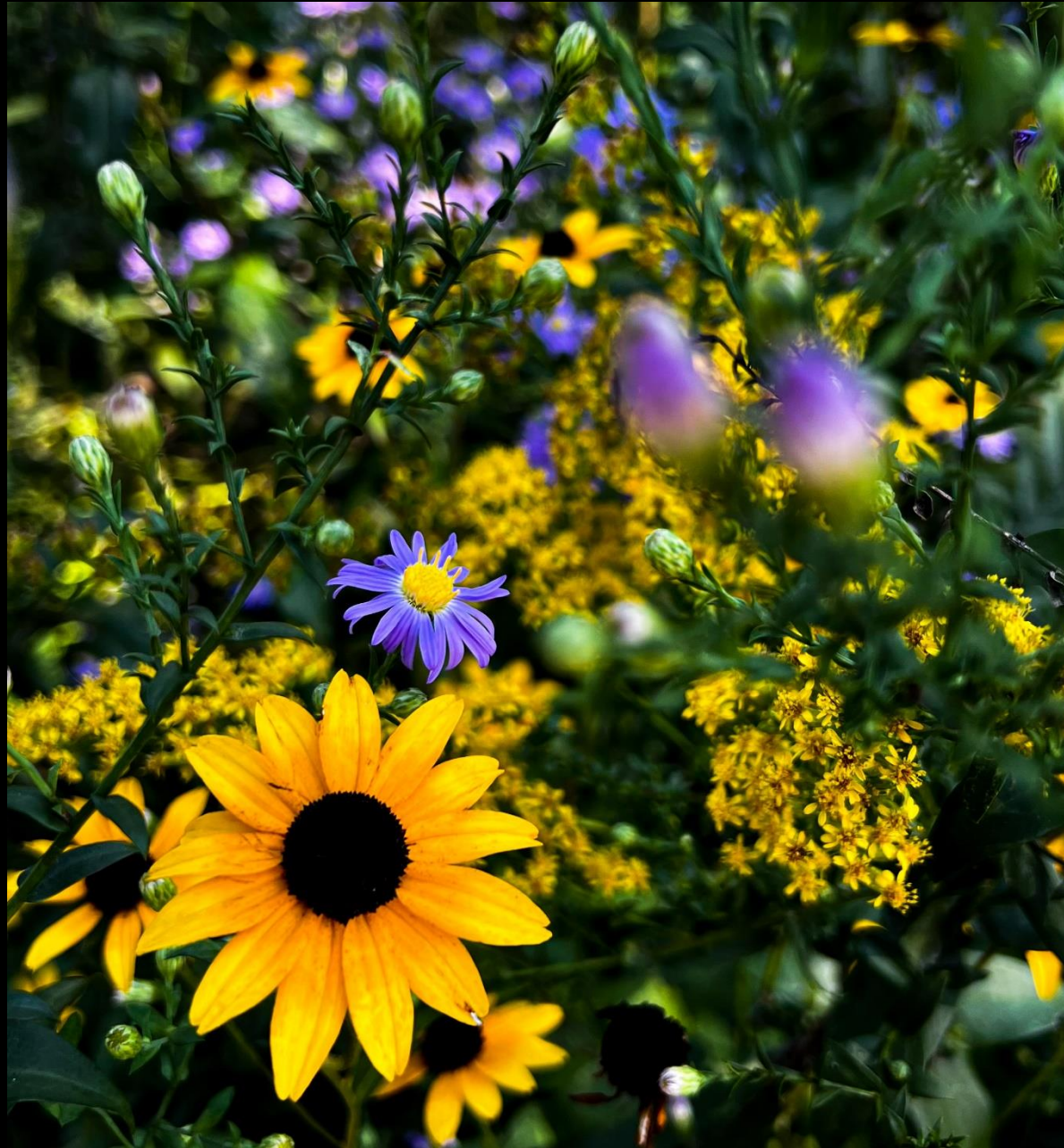
Muhlenbergia capillaris
Pink Muhly Grass

*A Naturalized Mix of
Native Perennials
&
Grasses*



Rudbeckia fulgida,
Aster novi-belgii,
Solidago spp.

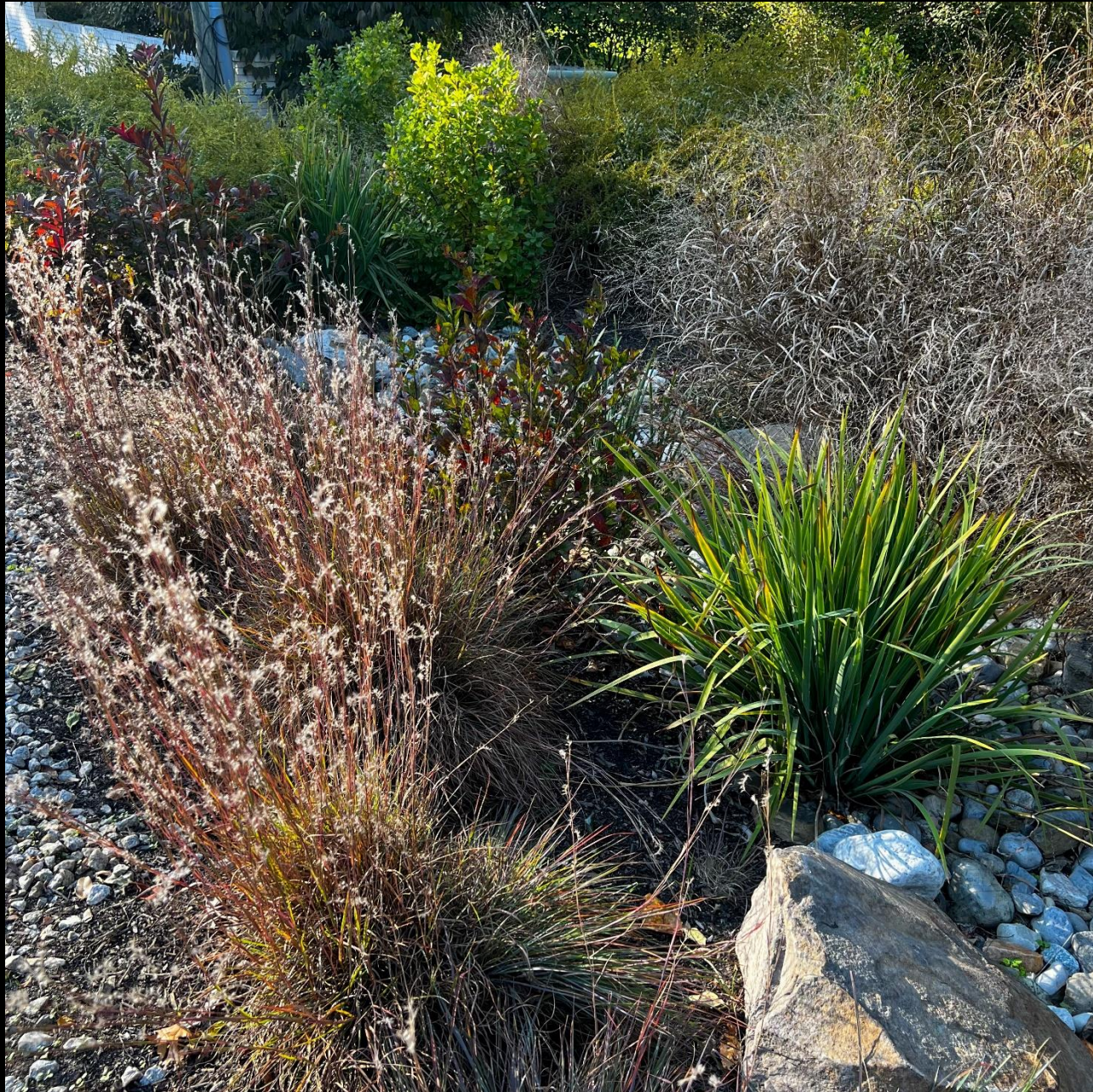
Black Eyed Susan,
New York Aster,
Goldenrod

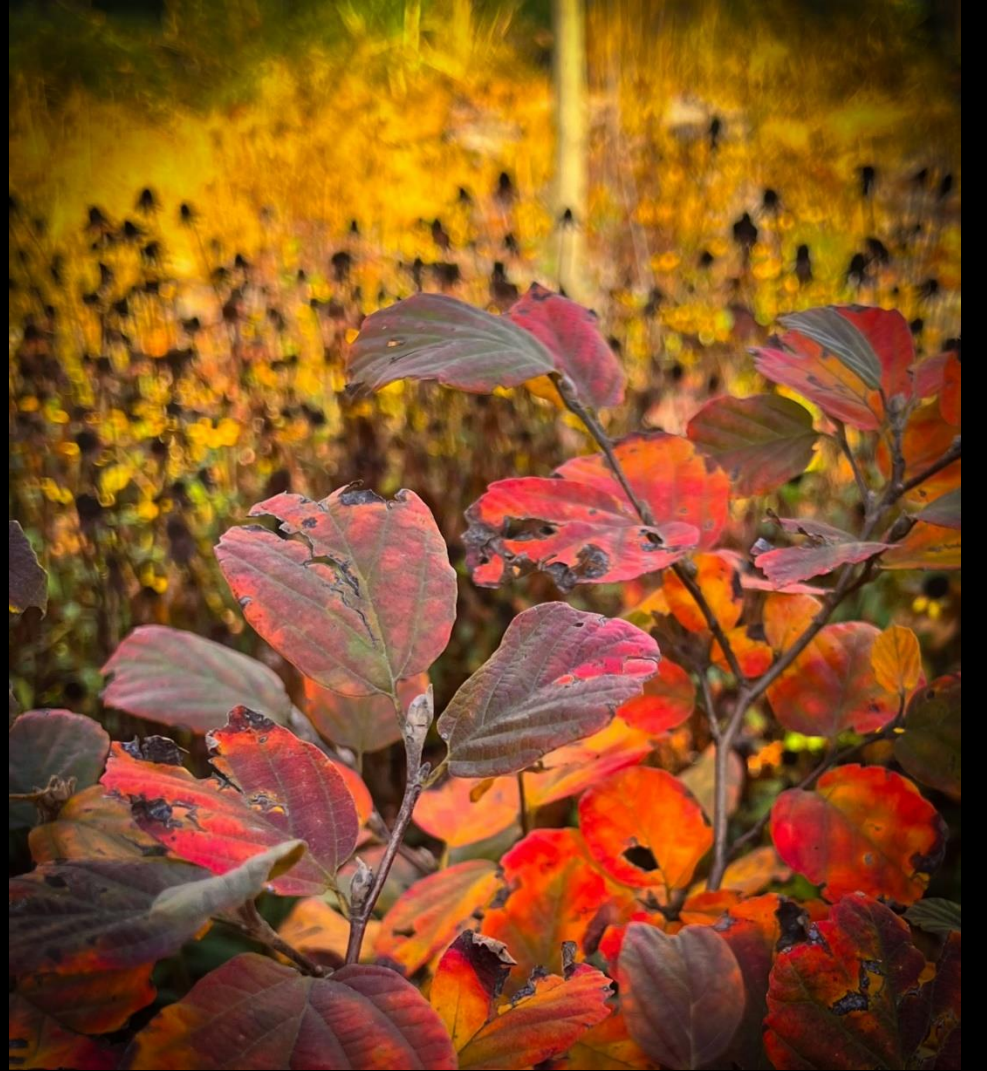












So, to Recap....

- Work with the colors of nature
- Combine structures and textures
- Plant in layers (matrix planting)
- Practice successional planting
- There is no wrong combination of native plants
- Practice with containers
- Experiment and have fun!



Thank You! Questions?

barbara@chainbridgenativelandscapes.com

Follow Chain Bridge Natives on Instagram

